
Arm-V

usb adapter

User manual

Arm-V usb adapter software installation

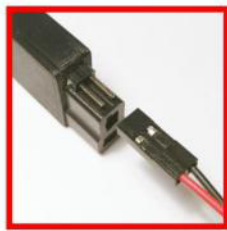
- install USB adapter driver;
- install NET Framework v. 4 or higher, if not already installed;
<https://www.microsoft.com/ru-ru/download/details.aspx?id=17851>;
- restart the computer.

ATTENTION: Do not connect Arm-V USB adapter to the loaded AEG.

ATTENTION: Connection of Arm-V USB adapter to Arm-V pro in the reverse polarity might lead it to shoot. It will not cause any damage.

ATTENTION: When Arm-V USB adapter is connected to Arm-V Pro, disconnection of the adapter from PC might lead Arm-V Pro to shooting. You should disconnect the adapter from Arm-V pro first.

- connect **Arm-V usb** adapter to PC;
- connect **Arm-V usb** adapter to **Arm-V pro**.

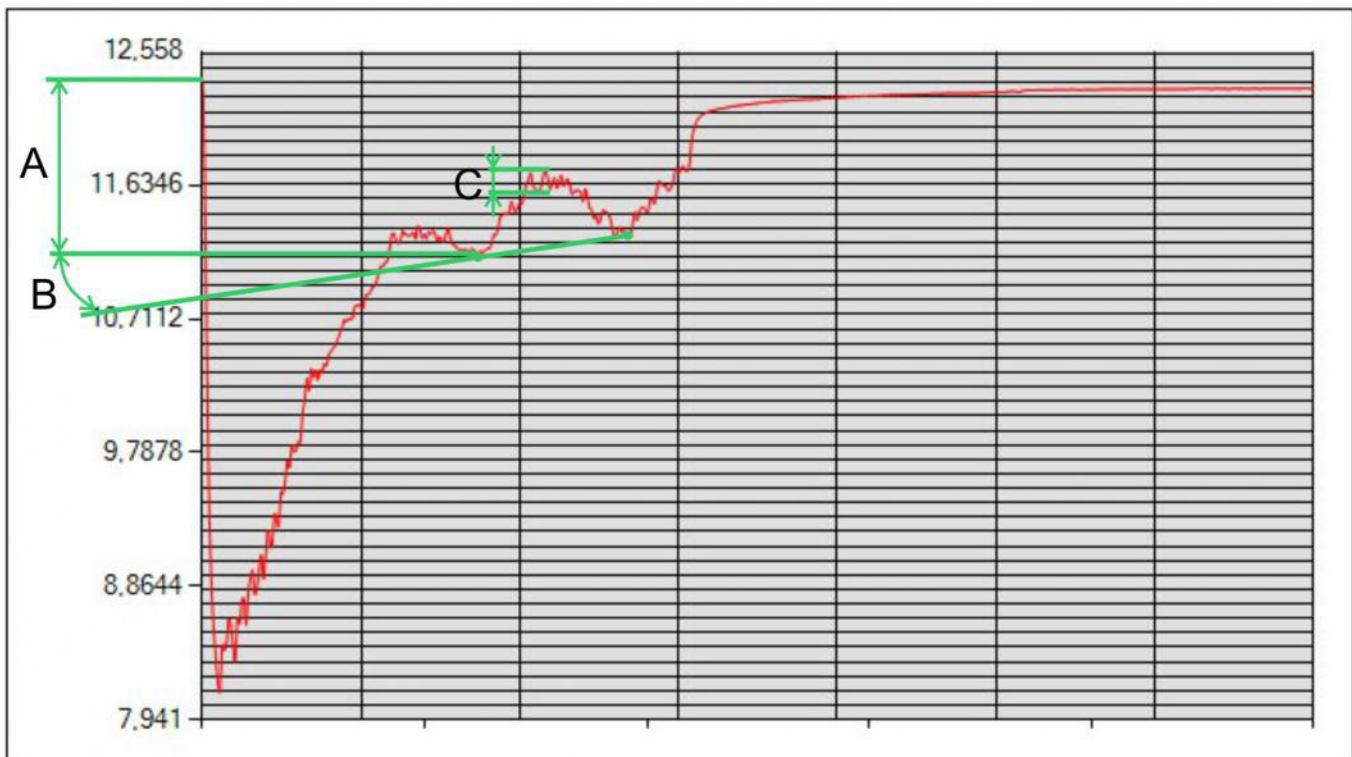


- run armvusb program.

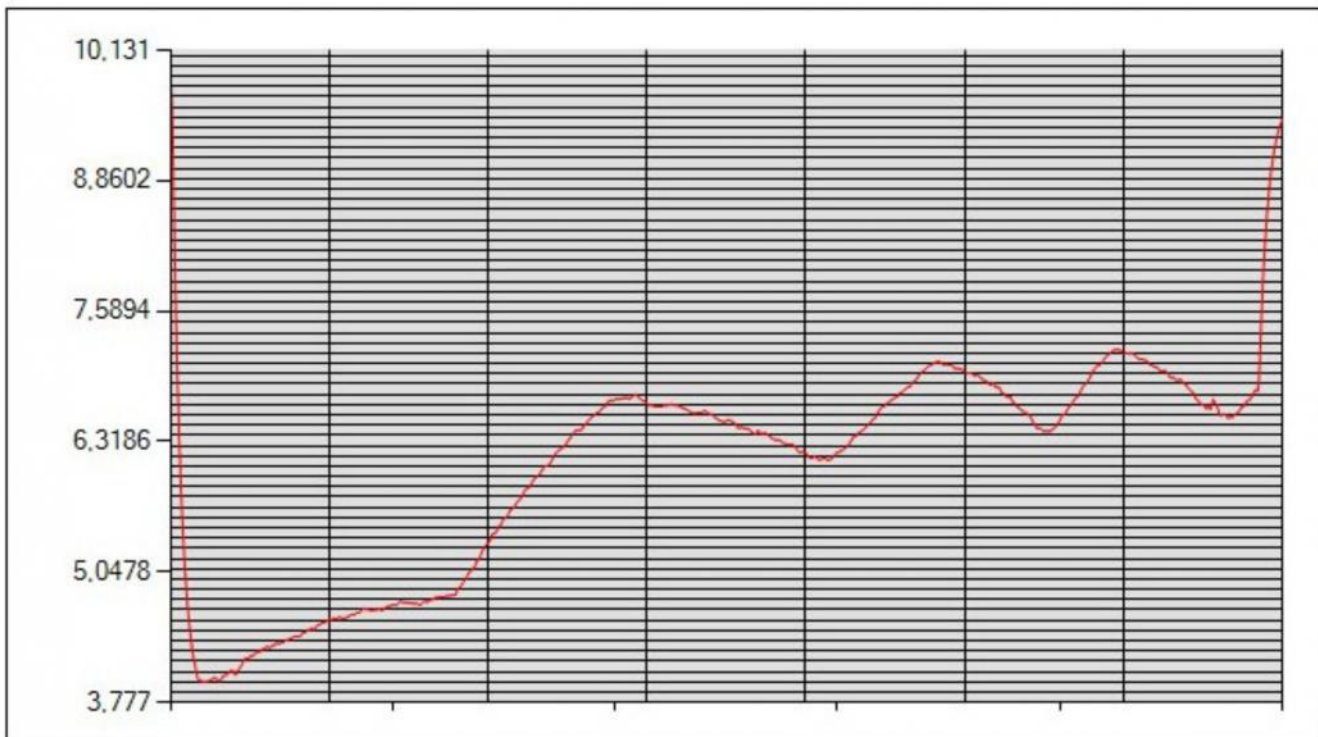
When launching the program, **Arm-V usb** adapter shall stay connected to **Arm-V pro**. When the program is running, you can disconnect **Arm-V pro** on the move.

TEST

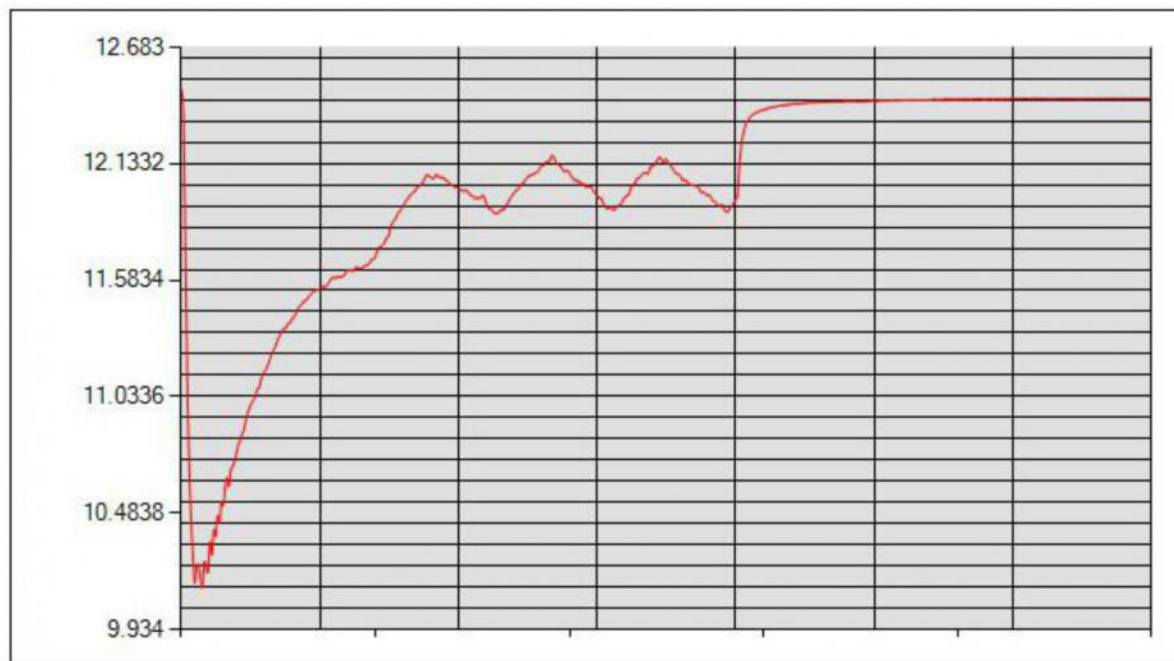
When testing AEG, you should consider 3 values as it is shown on the figure below:



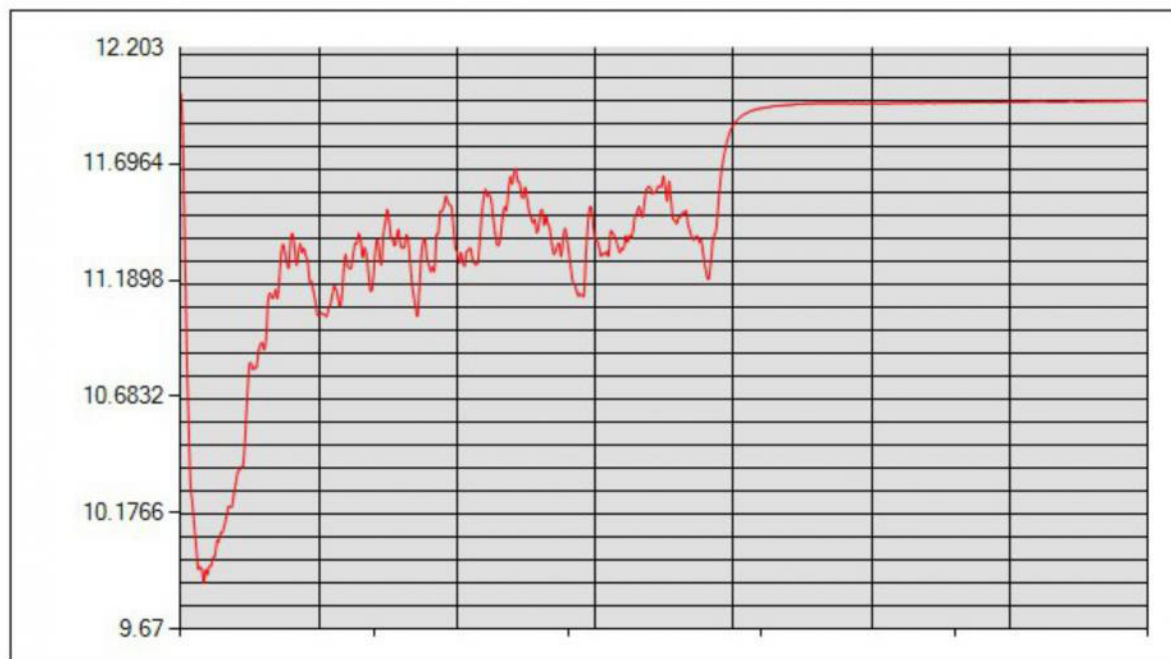
Value A shows the battery voltage drop when the motor is running. If A is less than 2 V, it is an indication of lack of the motor power as it is shown on the following figure:



Value B - if the angle is not zero, it means that the motor cannot reach the working cycles before the first shot. This can also indicate a high load for this type of motor. When the set is properly assembled, the angle should be zero, as it is shown on the following figure:

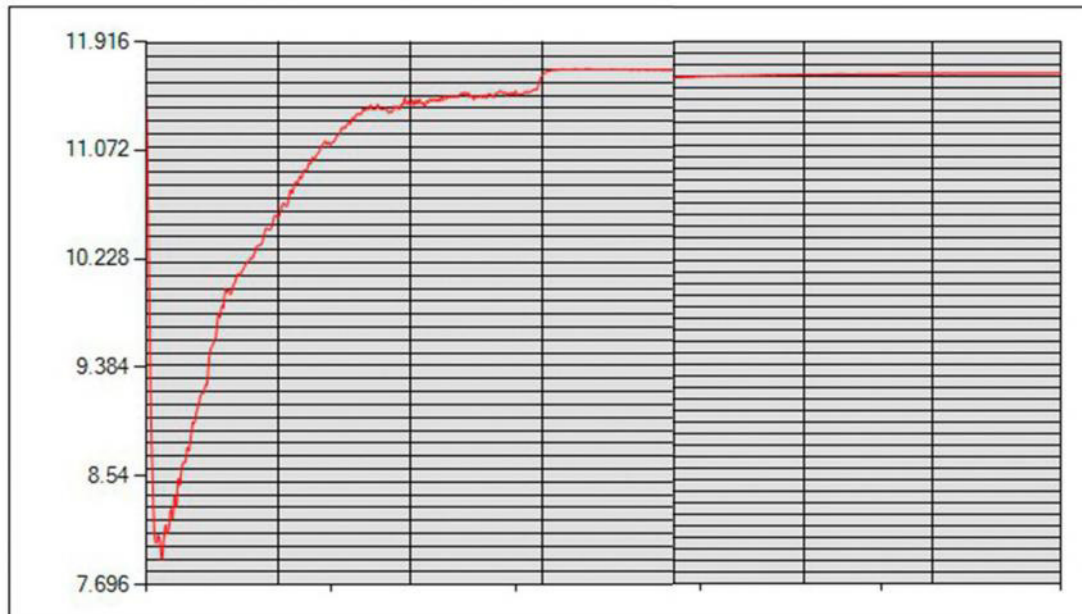


Value C is the noise level. It grows when the motor position is incorrect, at the lack of lubricant on the drive gears, improper shimming or sand in the gearbox. If the noise level is close to the one shown on the example below, maintenance of the gearbox is required.



The motor test

When testing the motor not connected to the gearbox, the chart should look as follows:



If the chart looks like an example below, it means that there has been a rupture in the motor winding. The motor is not usable.

